

## Fluoroscanner<sup>®</sup> InSight<sup>™</sup> FD Mini C-Arm



More control. More confidence. More efficient.

# FLUOROSCAN<sup>®</sup> InSight<sup>™</sup> FD

The Fluoroscanner<sup>®</sup> InSight<sup>™</sup> FD Mini C-Arm is designed to overcome the challenges of extremity imaging. Tailored to meet your needs with **simple, intuitive operation** and **excellent image quality**, the system provides greater control, confidence and procedural efficiency.

It's the ideal extremity imaging solution for surgical procedures in the Hospital OR, Ambulatory Surgery Centers or diagnostic imaging support in a busy Emergency Department, Orthopedic Clinic or Private Office.



**Low Dose Imaging** Image at up to **39% less dose** than



the competition – without the need for pulsed fluoroscopy.<sup>1</sup>

### **A. Rotating Flat Detector**

Designed to provide improved workspace access and the ability to change positioning  $\pm 90^\circ$  without moving the C-arm, to best suit the anatomy and optimize detector length to minimize dose.

### **B. Ergonomic C-Arm**

Further increase positioning options by pairing the rotating detector with an unmatched C-arm depth of 20", orbital rotation of  $120^\circ$  and the maximum allowable free space.

### **C. 24" HD Color Touchscreen**

See more detail from a distance when viewing larger - up to 31.4 x 31.4cm with MegaView™ Image - and brighter images on a 1920 x 1200 high-definition, high-bright display.

### **D. Intuitive User Interface**

Expedite procedures with a user-friendly touchscreen interface and color-directed functionality with customizable surgeon-specific settings.

### **E. Superb Image Quality**

Generate the best distortion-free image, at the lowest possible dose, each time with the latest high sensitivity CsI CMOS detector and advanced image processing algorithms.

### **F. Convenient Controls**

Effortlessly manage X-ray controls and image adjustments from the system's tube head controls and multi-function wireless foot pedal for a more efficient procedure.

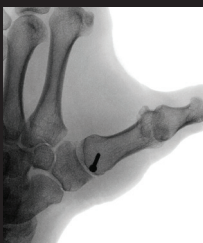
### **G. Connectivity**

Easily access your network through an Ethernet wired or wireless connection, or export and import images through a convenient USB port or CD/DVD drive.

### **H. Compact Size**

With a compact base and the smallest footprint available (71.1 x 81.3cm), the system is less intrusive during procedures and easier to store.

# Image Gallery



**Largest Primary Image Available**

See your primary image at up to **54% larger** than competitive mini C-arms.<sup>2</sup>



## Regional Service Support

We're dedicated to ensuring higher levels of performance and productivity from your mini C-arm systems.

Visit [www.fluoroscanner.com](http://www.fluoroscanner.com) or call your Hologic representative for more information.



**Fluoroscanner.com | [fluoroscanner@hologic.com](mailto:fluoroscanner@hologic.com)**

1. F.X. Masse Associates, Inc. Report, September, 2, 2015 and January 14, 2016. Dose Area Product (DAP) Meter Measurements. Measured for 30 second exposure of 19 mm Al phantom. 2. Data on file, as of October 2016.

MISC-04734 -EUR-EN Rev 002 (05/18) © 2018 Hologic. All rights reserved. Hologic, Fluoroscanner, InSight, MegaView, The Science of Sure and associated logos are trademarks and/or registered trademarks of Hologic, Inc. and/or its subsidiaries in the United States and/or other countries. This information is intended for medical professionals in the U.S. and other markets and is not intended as a product solicitation or promotion where such activities are prohibited. Because Hologic materials are distributed through websites, eBroadcasts and tradeshow, it is not always possible to control where such materials appear. For specific information on what products are available for sale in a particular country, please contact your local Hologic representative or write to [fluoroscanner@hologic.com](mailto:fluoroscanner@hologic.com).